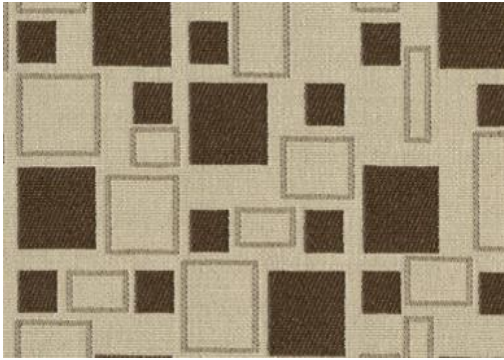


City Park



**Specifications:**

content: 100% Polyester  
 backing: Synthetic latex blend  
 finish: none  
 repeat: 7.25 in. / horizontal: 6 in. / vertical  
 weight: 16 oz / lin. yd. (506g/M)  
 width: 54 inches

**Flammability Passes:**

California Tech. Bulletin #117-2013  
 UFAC Class 1  
 NFPA 260 class 1

**Performance:**

abrasion: Heavy Duty – Exceeds 50,000 cycles  
 (Wyzenbeek – Cotton duck Abradant) (ASTM D4157)  
 light fastness: Class 4/40 hrs. min. (AATCC16A)  
 color fastness: Class 5 (ASTM D3597, AATCC 8) Wet  
 Class 5 (ASTM D3597, AATCC 8) Dry  
 physical properties: Class 4 (ASTM D3511) Brush Pill  
 130 lbs. warp, 250 lbs. weft (ASTM D5034) Breaking Strength  
 65 warp, 47 lbs. weft (ASTM D4034) Seam Slippage

made in: China

**Care & Cleanability:**

Cleaning code **W** - Spot clean only with water based upholstery shampoo or foam upholstery cleaner. Pretest a small, inconspicuous area before proceeding. Do not over wet. Do not use solvents to spot clean. Cushion covers should not be removed and laundered. When cleaning a spill, blot immediately to remove the spilled material. Evenly clean the entire panel in a seam to seam fashion. Do not clean just the spots or stains. When an overall soiled condition has been reached and professional care is required, contact an IICRC certified firm ([www.iicrc.org](http://www.iicrc.org)).